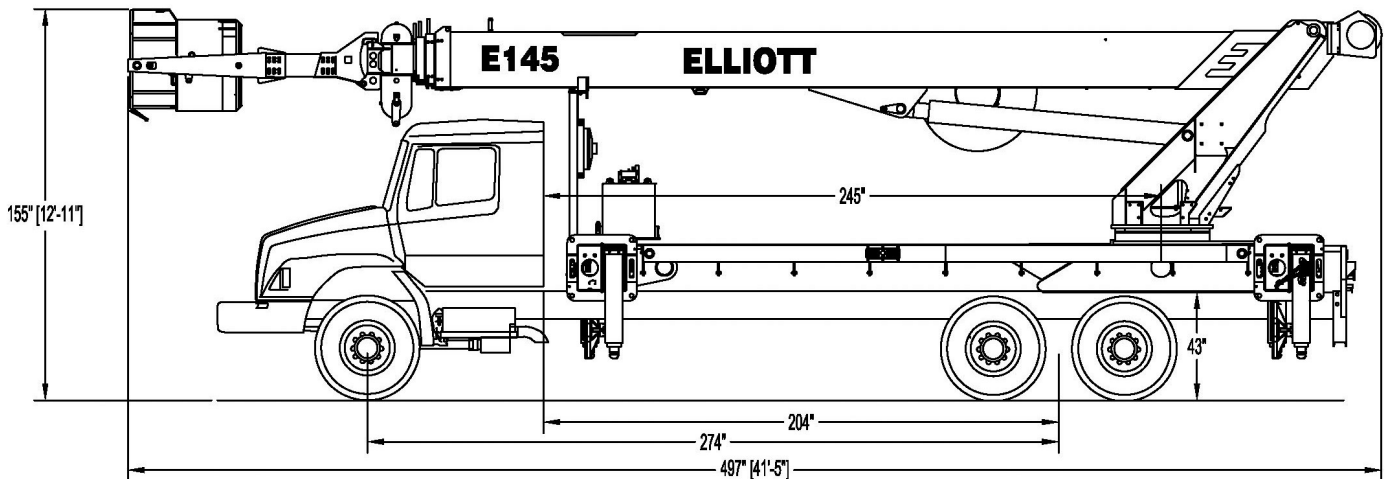




E145 SIDE VIEW DIAGRAM



- | | | | |
|---------------------------------|--------------------|------------------------------------|----------------------|
| • Maximum Working Height | 145'/44,2 m | • Overall Height | 12'11"/3,9 m |
| • Main Boom Length | 125'/38,1 m | • Operator Controls | Ride-Around Seated |
| • Powered Boom Sections | 5 | • Outrigger Type Front | Out-Down 'EZ-CRIB' |
| • Working Area | 360 Degrees | • Outrigger Spread Front | 21'2"/6,4 m |
| • Lifting Capacity | 18,000 lbs/8165 kg | • Outrigger Type Rear | Out-Down 'EZ-CRIB' |
| • Platform Capacity | 1,200 lbs/544 kg | • Outrigger Spread Rear | 21'2"/6,4 m |
| • Platform Size | 36"x72"/91x183 cm | • Minimum Front Axle Rating | 18,000 lbs/8165 kg |
| • Certification (ANSI) | ANSI A92.2 | • Minimum Rear Axle Rating | 40,000 lbs/18 144 kg |

TECHNICAL SPECIFICATIONS

Maximum Platform Height: 145' with two-man platform attached.

Work Platform: 36x72" gravity-leveled and heavy-duty steel platform with lower platform grating, 40" high rails, integral grounding lugs, and external hand protection rail. Includes hydraulically assisted yoke for easy attachment to boom tip. Equipped with two safety lanyard attachment loops and two safety harnesses and 72" lanyards. Includes a compact hydraulic intensifier in platform.

Platform Tools: Hydraulic tool circuit with boom mounted hose reel from turret to boom and jib tip for hydraulic tools.

Winch: Mounted at the base of boom for a long fleet angle and flat level spooling of rope. Winch is driven by a planetary reducer and powered by a hydraulic motor. Burst-of-speed winch provides increased line speed. The winch brake is spring applied, pressure release design. Supplied with 400' of 9/16" diameter synthetic rope with a single line pull of 9,000 lbs, and a downhaul ball with swivel hook.

Platform Controls: Hard-wired remote controls with radio backup for interference-protected proportional control over boom rotation, elevation, extension, and winch functions. Integral work envelope/LMI display provide operator with added safety.

Work Envelope/Load Moment Indicator (LMI) System: Electronic turret mounted computer. System senses hoist cylinder pressures, boom length, and boom angle with hydraulic function lockout. The display console is equipped with a graph showing crane utilization, boom angle or boom length, a mode select controls for main boom and jib operation, and an anti-two block with an audio/visual warning and shut-off functions to limit hook-boom point contact.

ERFSD Speed Reduction: Elliott exclusive feature uses LMI system to automatically slow down the speed of boom raise/lower/swing functions by 50% when the boom is telescoped near full extension.

Lower Controls: Elliott Ride-Around Control Console with seat, mounted on curbside of turret.

Outriggers: Two sets of 'EZ-crib' out-and-down outriggers with two-stage vertical stroke for longer penetration and less cribbing. Front and rear outriggers have a 21'2" span for excellent stability. Outriggers include removable ball socket aluminum pads that store on outrigger legs. Controls are located under each side of bed and at operator console. Outrigger interlocks prevent unit from being operated without outrigger deployment.

Frame: Full length, all welded rigid 4-plate design sub-frame. Sub-frame allows for bolt-on addition of aluminum bed wings, with top plate of subbase service as a portion of the bed deck, to form a three-piece bed.

Turret: Reverse offset turret is one-piece weldment. Turret rotates on large diameter ball bearing.

Rotation: Hydraulic motor drives turret through double reduction planetary swing drive for 360 degree continuous rotation.

Boom: 5-section fully proportional, high strength steel plated rectangular steel boom sections. Oversized smooth running wear pads and boom inspection/greasing holes for improved access. A maximum boom tip height of 137' mounted on a truck. Assembly includes heavy-duty cylinder fittings, pivot pins, and replaceable wear pads.

Boom Extension: Incorporates a 2-stage hydraulic extension cylinder, attached to the largest boom section, with a proportional cable extension

system driving the outermost sections.

Lift: One double-acting long stroke cylinder provide smooth and stable boom elevation. Holding valve prevents boom from falling in event of hose failure.

Cylinders: All cylinders use microhoned cylinder tubing, chrome shafts, top grade packing and protective rod wipers. Cylinder-mounted holding valves provided on all load-holding cylinders.

Hoses: All high pressure hose is wire braid reinforced with a minimum safety factor of 4 to 1.

Oil Tank Capacity: 119 gallons mounted on top of frame.

Hydraulic System: Equipped with PTO, piston pump, SAE O-ring face seals on pressure lines, and a 10-micron return line filter. The control valve distributes all flow to hoist system, swing circuit, and other crane functions. System is closed-center type.

Cab Equipment: PTO with indicator lights installed in truck cab. U/L approved 5:BC dry chemical fire extinguisher installed in truck cab.

Operators Manual & Video: Two CD copies and one hard copy of operation, maintenance, safety and parts manual provided with each unit. Operational and safety video provided at delivery.

Installation: Unit installed on truck, painted, system and tank filled with oil, tested, inspected, certified and ready to operate.

Standard Paint: Painted white, outriggers red, and bed/subframe black.

Warranty: One Year Parts & Labor, Lifetime Structural Warranty.

Testing: Unit complies with ANSI A92.2-2009 for Vehicle-Mounted Elevating and Rotating Aerial Devices.

Elliott Equipment Company reserves the right to change the specification of any unit at any time without prior notice. This brochure is only a statement of general specifications on the date of this publication. For more detailed info on specific Elliott trucks go to www.elliottequip.com

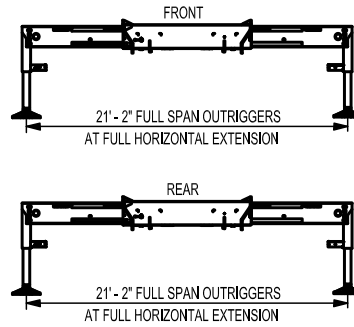
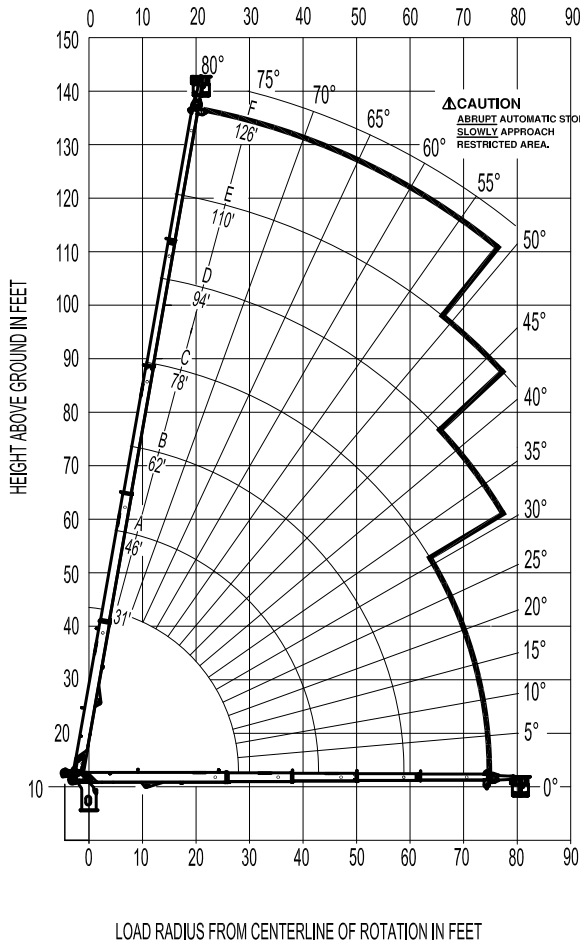
RANGE CHART - MAIN BOOM



MODEL E145

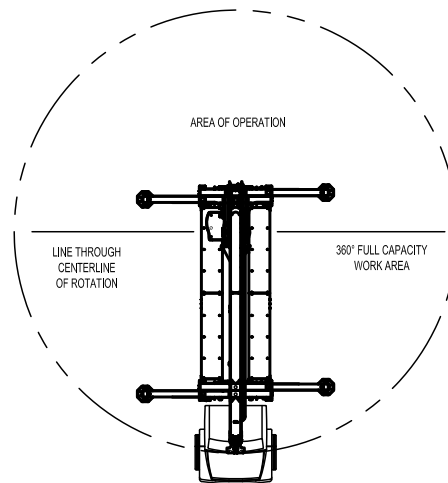
RANGE DIAGRAM WITH FULLY EXTENDED OUTRIGGERS

LMI MODES: MODE 2 & 3



NOTE:

1. Boom load ratings are based on loaded boom radius. Loaded boom angles are given as reference only.
2. Personnel handling is allowed only with full span outriggers.
3. Radius is measured from center of rotation to load line.



DO NOT PAINT OVER ANY LABELS 1200670 021015

RANGE CHART - MAIN BOOM WITH PLATFORM



MODEL E145

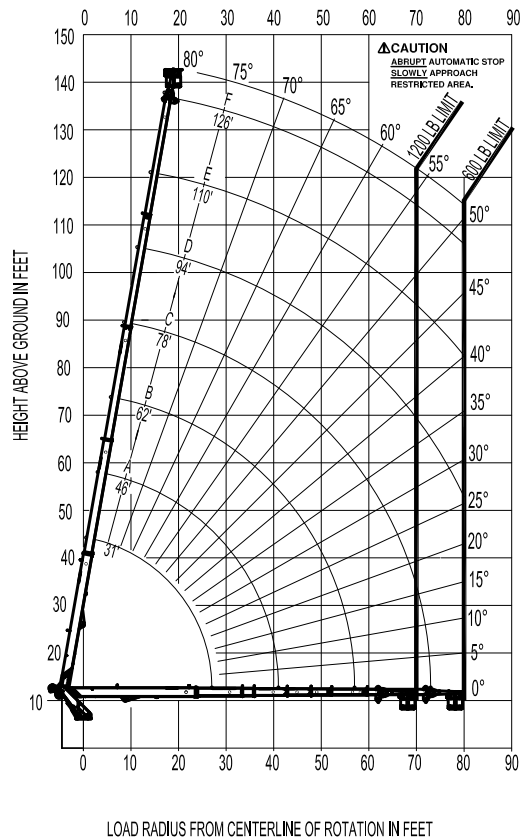
BOOM RANGE DIAGRAM WITH PLATFORM ATTACHED

LMI MODE: MODE 1

PLATFORM CAPACITY
1200 LBS MAX

| PLATFORM LOAD | MAXIMUM RADIUS |
|---------------|----------------|
| 1200 LBS | 70 FT |
| 600 LBS | 80 FT |

USE OUTRIGGERS
AT ALL TIMES



- NOTE:
1. Personnel handling is allowed only with full span outriggers.
 2. Boom load ratings are based on loaded boom radius.
Loaded boom angles are given as reference only.
 3. Radius is measure to the far platform railing.
 4. Refer to manual for wind considerations.

DO NOT PAINT OVER ANY LABELS 1200670 021015



Elliott Equipment Company
4427 South 76th Circle
Omaha, NE 68127
Phone: 402-592-4500
Fax: 402-592-4553
Email: sales@elliottequip.com

Built for You.
www.elliottequip.com

LOAD CHART - MAIN WINCH



MODEL E145

MAIN BOOM LOAD RATINGS WITH FULLY EXTENDED OUTRIGGERS

LMI MODES: MODE 2 & 3

MAIN BOOM LOAD RATINGS WITH PLATFORM ATTACHED

LMI MODE: MODE 2

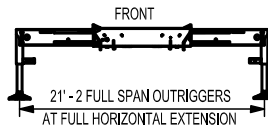
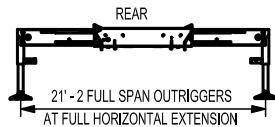
MAIN BOOM LOAD RATINGS WITH PLATFORM REMOVED

LMI MODE: MODE 3

LOAD RATINGS IN lbs WITH OUTRIGGERS AND STABILIZERS EXTENDED

| LOAD RADIUS (FT) | BOOM ANGLE (deg °) | 31-ft | BOOM ANGLE (deg °) | A 46-ft | BOOM ANGLE (deg °) | B 62-ft | BOOM ANGLE (deg °) | C 78-ft | BOOM ANGLE (deg °) | D 94-ft | BOOM ANGLE (deg °) | E 110-ft | BOOM ANGLE (deg °) | F 126-ft |
|------------------|--------------------|--------|--------------------|---------|--------------------|---------|--------------------|---------|--------------------|---------|--------------------|----------|--------------------|----------|
| 6 | 79 | 18,000 | | | | | | | | | | | | |
| 8 | 76 | 18,000 | | | | | | | | | | | | |
| 10 | 72 | 17,800 | 80 | 14,000 | | | | | | | | | | |
| 12 | 68 | 16,000 | 77 | 14,000 | | | | | | | | | | |
| 14 | 64 | 15,000 | 74 | 14,000 | 80 | 14,000 | | | | | | | | |
| 16 | 59 | 14,000 | 71 | 14,000 | 78 | 13,500 | | | | | | | | |
| 18 | 55 | 12,000 | 68 | 12,900 | 76 | 13,000 | | | | | | | | |
| 20 | 50 | 10,000 | 65 | 9,600 | 74 | 11,100 | 78 | 8,500 | | | | | | |
| 25 | 34 | 7,000 | 57 | 7,000 | 69 | 8,100 | 74 | 6,900 | 78 | 6,300 | | | | |
| 30 | | | 49 | 6,100 | 64 | 6,000 | 70 | 5,400 | 75 | 5,200 | 78 | 4,500 | 82 | 3,000 |
| 35 | | | 39 | 4,700 | 58 | 4,800 | 66 | 4,500 | 72 | 4,450 | 76 | 3,800 | 79 | 2,950 |
| 40 | | | 29 | 3,650 | 52 | 3,800 | 61 | 3,800 | 68 | 4,100 | 73 | 3,300 | 77 | 2,900 |
| 45 | | | | | 42 | 3,000 | 54 | 3,000 | 62 | 3,300 | 67 | 3,000 | 72 | 2,600 |
| 50 | | | | | 34 | 2,400 | 49 | 2,500 | 58 | 2,700 | 64 | 2,600 | 69 | 2,300 |
| 55 | | | | | 7 | 1,900 | 44 | 2,100 | 54 | 2,350 | 61 | 2,250 | 66 | 2,050 |
| 60 | | | | | | | 38 | 1,800 | 50 | 2,000 | 58 | 1,900 | 63 | 1,800 |
| 65 | | | | | | | 31 | 1,200 | 46 | 1,550 | 54 | 1,550 | 60 | 1,500 |
| 70 | | | | | | | 23 | 900 | 41 | 1,200 | 51 | 1,250 | 58 | 1,200 |
| 75 | | | | | | | | | 36 | 1,000 | 47 | 1,000 | 54 | 1,000 |
| 80 | | | | | | | | | 31 | 780 | 43 | 780 | 51 | 780 |
| | | | | | | | | | | | | | | |
| | 0 | 5,000 | 0 | 3,400 | 0 | 1,400 | 0 | 780 | | | | | | |
| | | 600 | | 600 | | 600 | | 600 | | 600 | | 600 | | 600 |

ADDITIONAL CAPACITY WHEN PLATFORM IS DETACHED (lbs)



ELLIOTT EQUIPMENT CO. SUPPLIED LOADLINE EQUIPMENT DEDUCTIONS: SEE WEIGHT TAG ON TACKLE AND DEDUCT APPROPRIATE WEIGHT FOR DOWNHAUL WEIGHT AND SHEAVE BLOCK. RADIUS IS MEASURED FROM CENTERLINE OF ROTATION TO LOAD LINE.

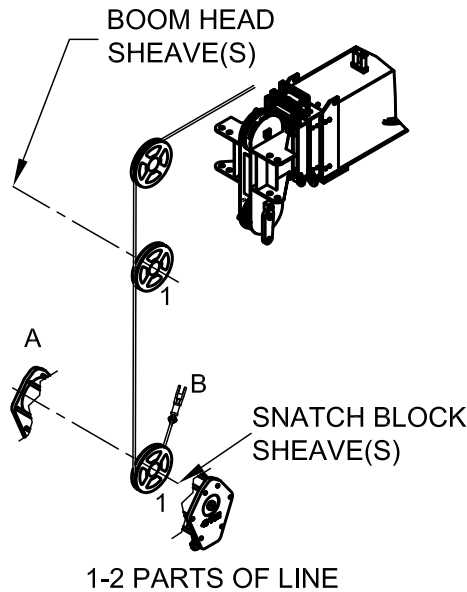
DO NOT PAINT OVER ANY LABELS 1200670 021015

WINCH DATA



MODEL E145

PARTS OF LINE



NOTICE:

- DO NOT DEADHEAD LINE BLOCK AGAINST BOOM TIP WHEN EXTENDING BOOM.
- KEEP AT LEAST 5 WRAPS OF LOADLINE ON THE WINCH DRUM AT ALL TIMES.
- USE ONLY 9/16" DIAMETER ROPE, AS SPECIFIED, WITH THE PROPER BREAKING STRENGTH LISTED.
- ANTI-TWO-BLOCK SYSTEM MUST BE IN GOOD OPERATING CONDITION BEFORE OPERATING CRANE. SEE OPERATION & SAFETY MANUAL.

| PARTS OF LINE | SHEAVE(S) ON BOOM HEAD | SHEAVE(S) ON SNATCH BLOCK | 9/16" - YALE ULTREX YELLOW ROPE 45,000-lbs. BREAKING STRENGTH |
|---------------|------------------------|---------------------------|---|
| 1 | 1 | A | 9,000 lbs |
| 2 | 1 B | 1 | 18,000 lbs |

A-DEAD END FOR ODD PARTS OF LINE
 B-DEAD END FOR EVEN PARTS OF LINE

DO NOT PAINT OVER ANY LABELS 1200670 021015

CHASSIS DATA

| | E145 E-Line |
|--------------------------------|-----------------------|
| Wheelbase (WB) | 274" / 696 cm |
| Cab to Trunnion (CT) | 204" / 518 cm |
| Afterframe (AF) | 110" / 280 cm |
| Truck Frame RBM Minimum | 3,300,000 in-lb |
| Front Axle Gross Weight Rating | 18,000 lb / 8165 kg |
| Rear Axle Gross Weight Rating | 40,000 lb / 18 144 kg |
| Gross Vehicle Weight (GVWR) | 58,000 lb / 26 308 kg |

Chassis data is minimum general requirements-not for engineering.
Actual dimensions and truck data will depend on truck selection and axle configuration.

OPTIONS



Fiberglass Platform Yoke
Fiberglass yoke for use with Elliott's two-man work platform.



Safety Lighting
A wide range of lighting solutions including strobes, work lights, and much more to boost safety and increase job site productivity.



Enclosed Steel Control Cab
Replaces the standard control station and include an sliding door, adjustable seat, heater, wipers, internal fan, audio system, option air conditioning and much more.



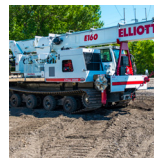
Outrigger Pads
Wooden or synthetic outrigger pads assist with spreading the load and improving stability on sensitive or soft job sites.



Bed-Mounted Accessories
Mount a wide variety of tool accessories including welders, power washers, and generators on the bed with reels and connections at ground level.



Work Area Definition System (WADS)
Elliott's LMI system includes the option to limit the work area via a 'virtual wall' to work around obstacles including power lines and obstructions.



Track Vehicle Mounting Solutions
Available with installation on an off-road track vehicle carrier with rubber tracks and steel grousers for the most severe terrain applications.



Custom Tool Boxes
Steel and aluminum lockable tool boxes located beneath and above the bed for transporting essential equipment and job site tools.